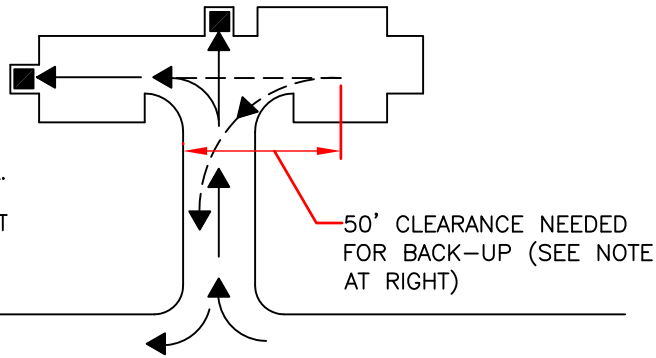


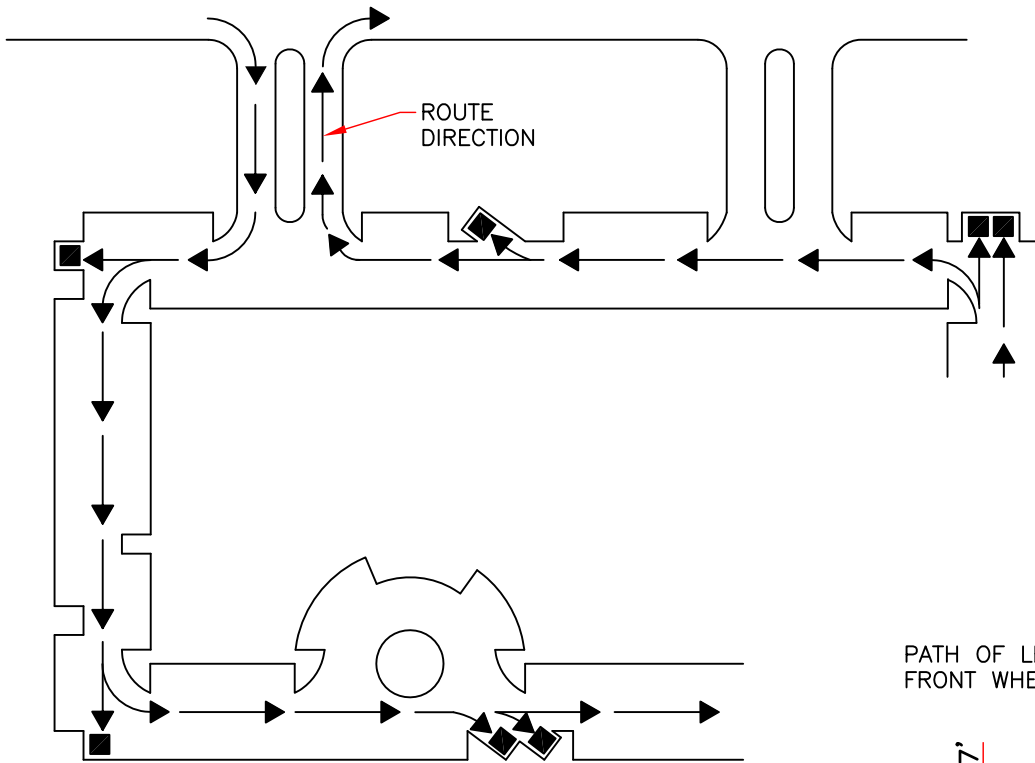
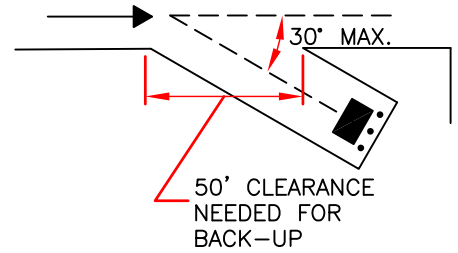
HAMMER HEAD DRIVE

PLEASE NOTE

SOLID WASTE VEHICLES WEIGH APPROX. 29 TONS WHEN FULL. DRIVEWAYS MUST BE BUILT TO SUPPORT THIS WEIGHT WITHOUT DAMAGE TO DRIVE.



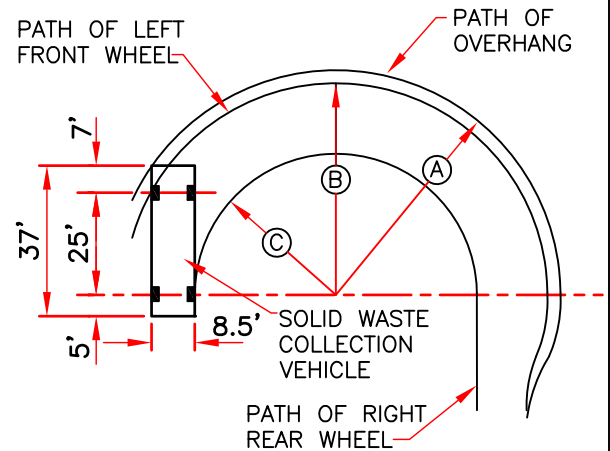
MAX. BIN DEVIATION



A TYPICAL SOLID WASTE COLLECTION ROUTE

SAFETY NOTE

BACKING UP MORE THAN 50' AFTER SERVICE TO A SOLID WASTE BIN IS PROHIBITED. THE 50' IS MEASURED FROM THE BACK OF THE SOLID WASTE COLLECTION VEHICLE. MAKE SURE THE AREA HAS THE PROPER TURNING RADIUS AND ACCESS AREA TO LEAVE SITE. THE VEHICLE IS APPROX. 37' LONG. SOLID WASTE COLLECTION VEHICLES WILL NOT TURN WHILE BACKING.



- (A) 44' MIN. TURNING RADIUS
- (B) 43'-2" TURNING RADIUS
- (C) 29'-3" TURNING RADIUS

N.T.S.

STANDARDS FOR SOLID WASTE VEHICLE ACCESS

REVISED
2017

STANDARD DETAIL
SALT RIVER PIMA-MARICOPA INDIAN COMMUNITY

DETAIL NO.
200-1



CLEARANCE REQUIREMENTS

NOTES

1. ALL CURBS ARE TO BE ALIGNED ON THE OUTSIDE OF ENCLOSURE WALLS. THE CURBS SHALL NOT INTERFERE WITH THE ROUTE OF THE SOLID WASTE COLLECTION VEHICLE.
2. IN GENERAL TERMS, ALL SOLID WASTE COLLECTION ROUTES SHALL MEET ENGINEERING DESIGN CRITERIA (STREET WIDTHS, TURNING RADIUS) IN A MANNER THAT ALLOWS SOLID WASTE COLLECTION VEHICLES ACCESS TO BIN ENCLOSURES. SITES SHALL BE DESIGNED SO COLLECTION VEHICLES CAN SAFELY ACCESS AND LIFT A BIN WITHOUT OBSTRUCTIONS (GROUND LEVEL AND AERIAL OBSTRUCTIONS).
3. FOR THE SAFETY OF OTHERS, SOLID WASTE COLLECTION VEHICLES WILL NOT BACK UP MORE THAN 50 FEET AFTER SERVICING A BIN AND WILL NOT MAKE ANY TURNS WHILE BACKING.
4. NO AWNINGS OR BUILDING PROJECTIONS ALLOWED IN SOLID WASTE COLLECTION VEHICLE ROUTES. MINIMUM OVERHEAD CLEARANCE OF 14' IS REQUIRED IN DRIVE, 20' OVER BARREL SERVICE LOCATION AND 25' OVER BIN ENCLOSURE AREA.
5. ROUTES SHALL BE CLEAR OF ALL OBSTRUCTIONS (CURBS, WALLS, OVERHEAD WIRES, AND AWNINGS) TO PREVENT DAMAGE FROM THE COLLECTION VEHICLE.
6. TAKE NOTE OF THE SOLID WASTE COLLECTION ROUTE. THE COLLECTION VEHICLE SHALL TRAVEL THROUGH A SITE ONCE WITHOUT BACKTRACKING.
7. BIN ENCLOSURES ARE TO BE ANGLED NO MORE THAN 30 DEGREES FROM THE CENTER LINE OF THE SOLID WASTE COLLECTION VEHICLE ROUTE.
8. BIN ENCLOSURES SHALL BE LOCATED AWAY FROM ENTRANCES AND EXITS OR BUSINESS DRIVE-THRU'S SO SOLID WASTE COLLECTION VEHICLE DOES NOT CREATE A SAFETY HAZARD BY BLOCKING IN-COMING OR OUT-GOING TRAFFIC.
9. STANDARDS FOR SINGLE, DOUBLE, AND TRIPLE-WIDE BIN ENCLOSURES ARE ADDRESSED IN SRP-MIC STANDARD DETAILS 201-1, 201-2, AND 202.

N.T.S.

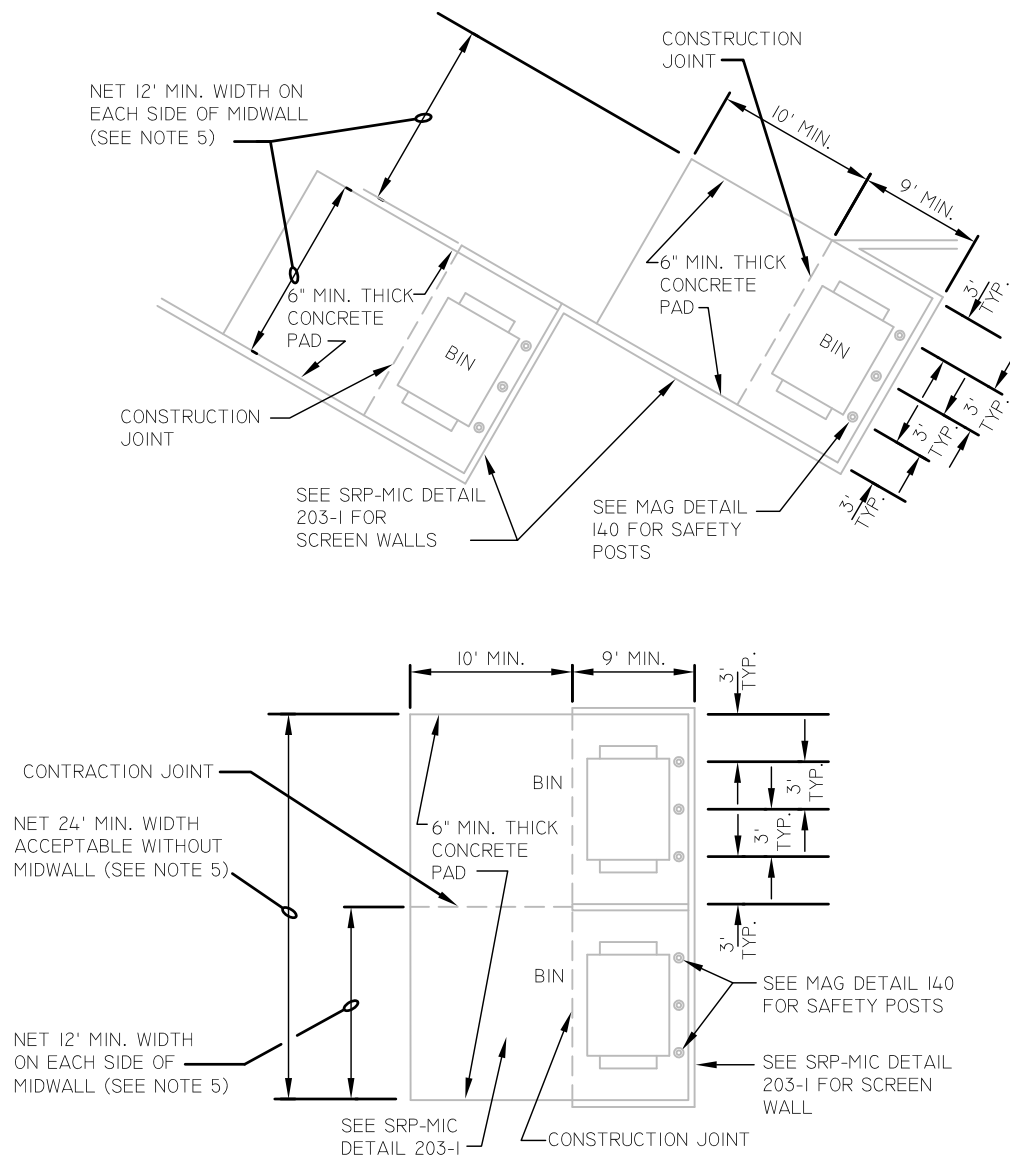
STANDARDS FOR SOLID WASTE VEHICLE ACCESS



REVISED
2017

STANDARD DETAIL
SALT RIVER PIMA-MARICOPA INDIAN COMMUNITY

DETAIL NO.
200-2



DOUBLE-WIDE BIN ENCLOSURE CONFIGURATIONS

N.T.S.

DOUBLE-WIDE BIN ENCLOSURES

REVISED
2017

STANDARD DETAIL
SALT RIVER PIMA-MARICOPA INDIAN COMMUNITY

DETAIL NO.
201-1



NOTES

1. ALL COMMERCIAL PROPERTIES SHALL BE DESIGNED WITH ENCLOSURES TO ACCOMMODATE (1) REFUSE AND (1) RECYCLING ENCLOSURE FOR EVERY 20,000 SQUARE FEET OF BUILDING SPACE. RESTAURANTS WHICH ARE DESIGNED ON A SINGLE PAD SHALL HAVE A MINIMUM (1) REFUSE AND (1) RECYCLING ENCLOSURE. THE ENCLOSURES CAN BE SET UP AS DOUBLE OR SINGLE TO MAXIMIZE THE USE OF THE PROPERTY.
2. COMPACTORS CAN BE USED IN DEVELOPMENTS WHERE THE EMPLOYEES LOAD AND ACTIVATE THE COMPACTING EQUIPMENT. DEVELOPMENTS THAT ALLOW CUSTOMERS OR RESIDENTS ACCESS TO THE COMPACTING EQUIPMENT WILL NOT BE APPROVED.
3. SINGLE-WIDE BIN ENCLOSURES SHALL HAVE A NET ENCLOSURE OPENING OF 12 FEET.
4. DOUBLE-WIDE BIN ENCLOSURES SHALL HAVE A NET ENCLOSURE OPENING OF 24 FEET WITHOUT MIDWALLS. ALTHOUGH NOT PREFERRED, DOUBLE WIDE BIN ENCLOSURES CAN BE DESIGNED WITH MIDWALLS WITH A NET ENCLOSURE OPENING OF 12 FEET ON EACH SIDE OF MIDWALL.
5. GATES, HINGES, SAFETY POSTS, & MOUNTING HARDWARE SHALL BE INSTALLED SO THERE IS A MIN. 9 FOOT DEPTH CREATED WITHIN EACH ENCLOSURE.
6. DO NOT PLACE REFUSE ENCLOSURES AT THE END OF A DEAD END PARKING AISLE. LOCATE AND POSITION ENCLOSURES TO FACILITATE COLLECTION WITHOUT BACKTRACKING. LOCATE ENCLOSURES TO BE EASILY ACCESSIBLE FOR COLLECTION BY A SIMPLE ROUTE.
7. GATES, HINGES AND MOUNTING HARDWARE SHALL NOT INTRUDE UPON MINIMUM NET ENCLOSURE OPENING SO THERE IS A MINIMUM 12' WIDTH WITHIN EACH ENCLOSURE. DOUBLE ENCLOSURE GATES MUST BE ABLE TO OPEN SIMULTANEOUSLY.
8. BIN ENCLOSURES ARE TO BE ANGLED NO MORE THAN 30 DEGREES FROM THE CENTER LINE OF THE SOLID WASTE COLLECTION VEHICLE ROUTE.
9. BINS THAT ARE VISIBLE FROM A PUBLIC ROADWAY SHALL HAVE ENCLOSURE GATES THAT SCREEN THE BINS FROM PUBLIC VIEW.
10. BIN ENCLOSURES TO BE A MINIMUM OF 3 FEET FROM ANY NON-COMBUSTIBLE PLANNED OR EXISTING STRUCTURE AT ITS CLOSEST POINT; 5 FEET FROM ANY COMBUSTIBLE PLANNED OR EXISTING STRUCTURE AT ITS CLOSEST POINT (PER 2015 IFC).
11. STANDARDS FOR SOLID WASTE VEHICLE ACCESS ARE ADDRESSED IN SRP-MIC STANDARD DETAIL 200-1 & 200-2.
12. STANDARDS FOR TRIPLE WIDE ENCLOSURES ARE ADDRESSED IN SRP-MIC DETAIL 202.
13. STANDARDS FOR BIN ENCLOSURE SCREEN WALLS, SAFETY POSTS, AND GATES ARE ADDRESSED IN SRP-MIC DETAIL 203-1 & 203-2.
14. RESTAURANTS MUST PROVIDE A SEPARATE ENCLOSED AREA TO ACCOMMODATE THEIR GREASE TRAP. THIS DESIGNATED AREA MUST NOT INTERFERE WITH THE TRASH/RECYCLING COLLECTION.
15. SOLID WASTE ENCLOSURES MAY INCLUDE WATER CONNECTIONS & DRAINS TO FACILITATE CLEANING OF DUMPSTERS. THESE SHOULD BE LOCATED TO NOT IMPEDE THE ENCLOSURE OPENING (AND GATING IF REQUIRED). ADDITIONAL ITEMS SUCH AS LANDSCAPING CONTROL BOXES AND LIGHTING MAY BE POSITIONED ON THE OUTSIDE OF THE ENCLOSURE WALLS.
16. TREE PLANTING SHOULD NOT TAKE PLACE WITHIN TEN (10) FEET OF THE BIN ENCLOSURE AND SHOULD BE SPACED SO AS NOT TO CREATE AN AERIAL OBSTRUCTION FOR THE BIN DUMPING AT THE FINAL FULL GROWTH DIMENSIONS.

N.T.S.

SINGLE & DOUBLE-WIDE BIN ENCLOSURES – NOTES

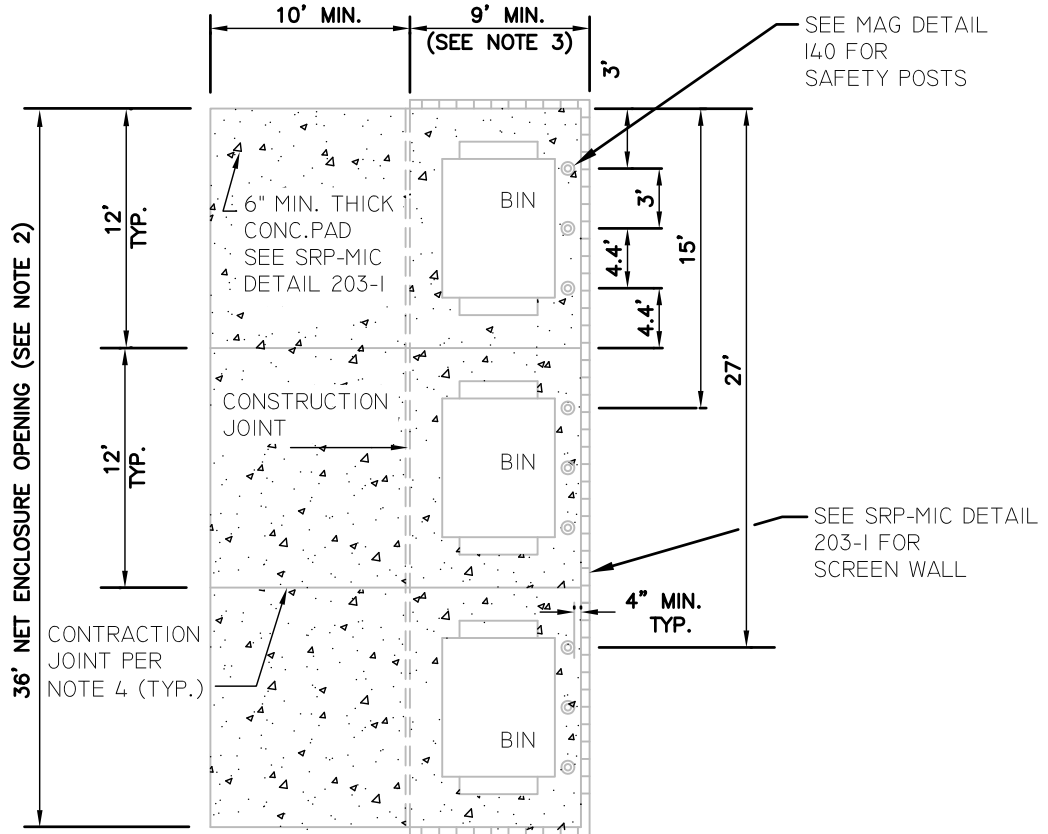
REVISED
2017

STANDARD DETAIL
SALT RIVER PIMA-MARICOPA INDIAN COMMUNITY

DETAIL NO.
201-2

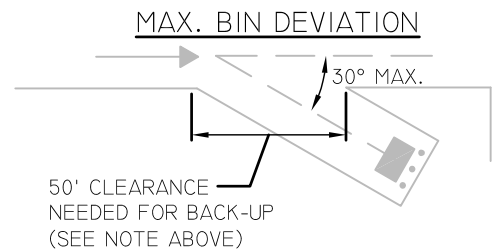


TRIPLE-WIDE BIN ENCLOSURE



NOTES

1. MULTI-UNIT RESIDENTIAL DEVELOPMENTS MAY BE DESIGNED WITH A TRIPLE-WIDE ENCLOSURE TO ACCOMMODATE RECYCLING. ADDITIONAL ENCLOSURES MAY BE NECESSARY DEPENDING ON NUMBER OF UNITS.
2. TRIPLE-WIDE ENCLOSURES SHALL HAVE A NET ENCLOSURE OPENING OF 36 FEET AND SHALL BE DESIGNED WITHOUT MIDWALLS. GATES, HINGES, AND MOUNTING HARDWARE SHALL NOT INTRUDE UPON MINIMUM NET ENCLOSURE OPENING. GATES MUST BE ABLE TO OPEN SIMULTANEOUSLY.
3. GATES, HINGES, SAFETY POSTS, AND MOUNTING HARDWARE SHALL BE INSTALLED SO THERE IS A MINIMUM 9 FOOT DEPTH CREATED WITHIN EACH ENCLOSURE.
4. BIN ENCLOSURES ARE TO BE ANGLED NO MORE THAN 30 DEGREES FROM THE CENTER LINE OF THE SOLID WASTE COLLECTION VEHICLE ROUTE.
5. CONTRACTION JOINTS MAY BE EITHER SCORED OR SAWCUT 1-INCH DEEP.
6. GATES, HINGES AND MOUNTING HARDWARE SHALL NOT INTRUDE UPON MINIMUM NET ENCLOSURE OPENING SO THERE IS A MINIMUM 12' WIDTH CLEAR WITHIN EACH ENCLOSURE.



N.T.S.

STANDARDS FOR TRIPLE WIDE BIN ENCLOSURES

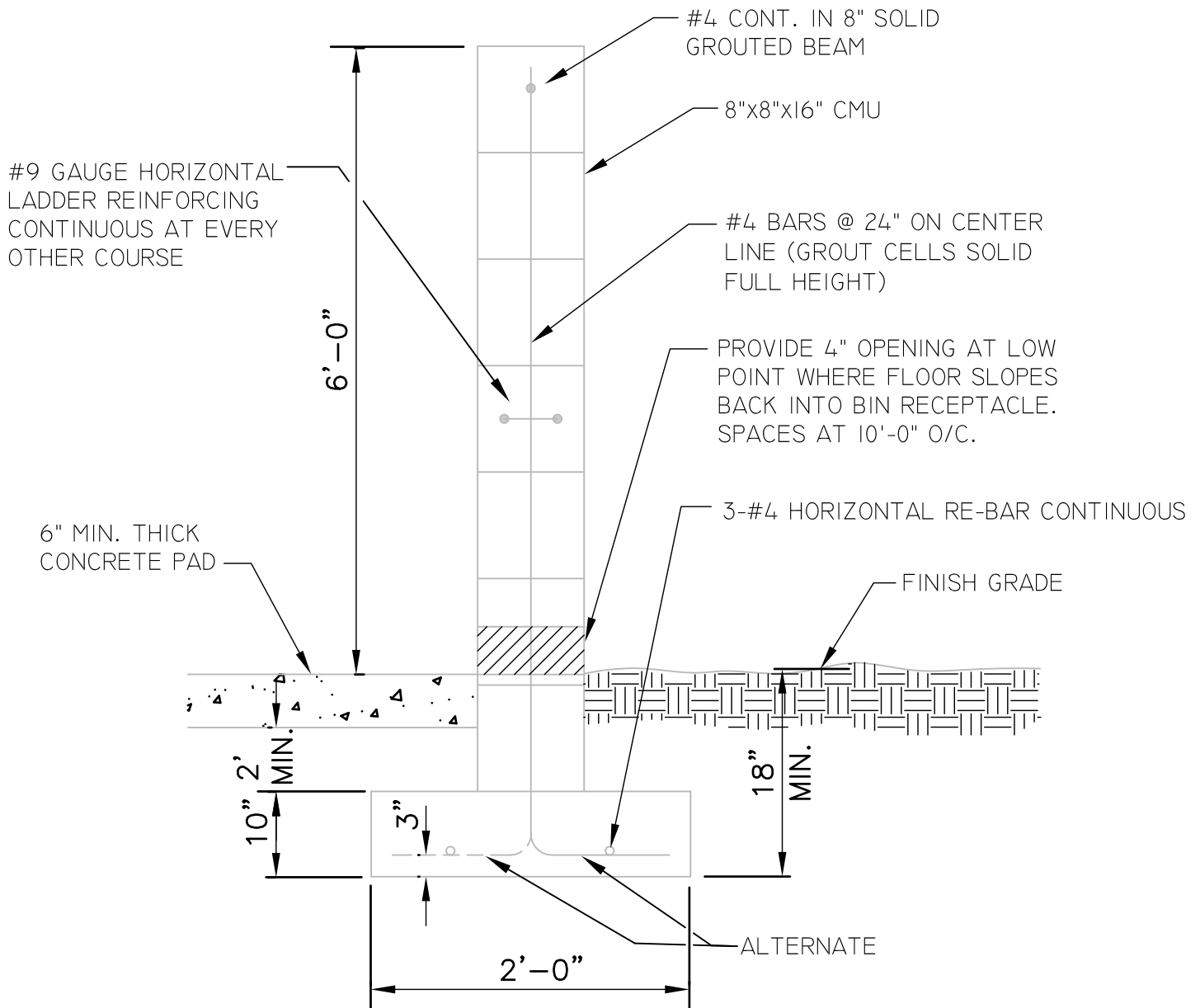


REVISED
2017

STANDARD DETAIL
SALT RIVER PIMA-MARICOPA INDIAN COMMUNITY

DETAIL NO.
202

6-FOOT MASONRY SCREEN WALL



NOTE:

- I. DESIGN SHOULD ENSURE STANDARD HAS AN APPLICABLE SOIL SITE CONDITION.

N.T.S.

STANDARDS FOR BIN ENCLOSURE WALL AND GATE

REVISED
2017

STANDARD DETAIL
SALT RIVER PIMA-MARICOPA INDIAN COMMUNITY

DETAIL NO.
203-1



NOTES

1. TRASH AND RECYCLING BIN AREA SHALL BE SCREENED WITH A SIX FOOT MIN. (6' MIN.) MASONRY WALL PER SRP-MIC STANDARD DETAIL 203-1.
2. EXTERIOR FINISH OF 6 FOOT MASONRY SCREEN WALLS SHALL BE COORDINATED ARCHITECTURALLY WITH PRIMARY BUILDING FINISHES.
3. BIN ENCLOSURE TO BE A MINIMUM OF 3 FEET FROM ANY NON-COMBUSTIBLE PLANNED OR EXISTING STRUCTURE AT ITS CLOSEST POINT, AND 5 FEET FROM ANY COMBUSTIBLE PLANNED OR EXISTING STRUCTURE AT ITS CLOSEST POINT (PER 2015 IFC).
4. BINS THAT ARE VISIBLE FROM A PUBLIC ROADWAY SHALL HAVE ENCLOSURE GATES THAT SCREEN THE BINS FROM PUBLIC VIEW.
5. EACH ENCLOSURE GATE SHALL HAVE DROP PINS INSTALLED AND HOLES DRILLED IN THE CONCRETE AT BOTH THE OPEN AND CLOSED POSITIONS TO PREVENT GATES FROM CLOSING INTO THE COLLECTION VEHICLE.
6. BIN ENCLOSURES SHALL HAVE (3) 6" DIAMETER STEEL SAFETY POSTS INSTALLED IN THE BACK OF THE ENCLOSURE ONLY PER MAG BOLLARD DETAIL 140.
7. STANDARDS FOR SOLID WASTE VEHICLE ACCESS ARE ADDRESSED IN SRP-MIC STANDARD DETAIL 200-1 AND 200-2.
8. STANDARDS FOR SINGLE, DOUBLE, AND TRIPLE-WIDE BIN ENCLOSURES ARE ADDRESSED IN SRP-MIC STANDARD DETAILS 201-1, 201-2 AND 202.

CONT.

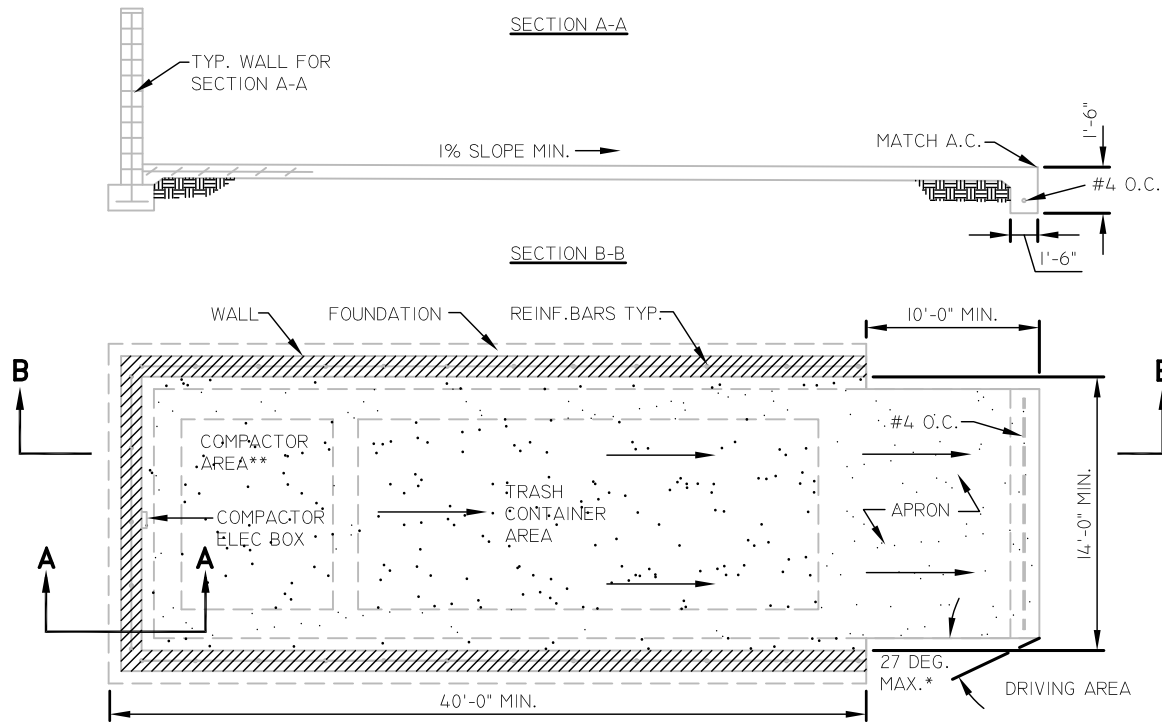
REVISED
2017

STANDARD DETAIL
SALT RIVER PIMA—MARICOPA INDIAN COMMUNITY

DETAIL NO.
203—2



LARGE COMPACTOR REFUSE AREA



NOTES:

1. ALL INTERIOR PAD DIMENSIONS ARE MINIMUMS.
2. WALL HEIGHT DETERMINED BY COMPACTOR HEIGHT (6'-0" MIN.).
3. FINAL LOCATION AND ORIENTATION TO BE DETERMINED BY THE SRP-MIC PUBLIC WORKS DEPARTMENT.
4. PROVIDE PEDESTRIAN ACCESS TO THIS AREA (THRU WALL)
5. SAFETY POSTS, WHEEL STOPS, & GUIDE RAILS SECURED TO CONCRETE SLAB, ARE REQUIRED FOR ALL ENCLOSURES. SAFETY POSTS ARE ADDRESSED IN MAG DETAIL 140.
6. RINSE AND WASH WATER FROM CLEANING WASTE CONTAINERS INTO A SANITARY SEWER. DO NOT DISCHARGE WASH WATER TO THE STREET OR STORM DRAIN. CLEAN IN DESIGNATED WASH AREA THAT DRAINS TO A CLARIFIER.
7. ANY DOORS PROVIDED (NOT SHOWN ON THIS DETAIL) SHALL BE SELF-CLOSING AND SELF-LATCHING.
8. GATES (NOT SHOWN ON THIS DETAIL) SHALL BE PROVIDED FOR SCREENING PURPOSES ACROSS THE FRONT OF THE ENCLOSURE. STANDARDS FOR GATES ARE ADDRESSED IN SRP-MIC DETAILS 203-1 AND 203-2.
9. GATES, HINGES, AND MOUNTING HARDWARE SHALL NOT INTRUDE UPON MINIMUM NET ENCLOSURE OPENING.
10. ENCLOSURES SHALL HAVE A MINIMUM OPENING OF 14'.
11. SOME COMPACTORS MAY HAVE COMPACTOR AREA IN FRONT (PREFERRED METHOD). SELF LOADING FRONT LOAD COMPACTOR PREFERRED.

STANDARDS FOR LARGE COMPACTOR REFUSE AREA

REVISED
2017

STANDARD DETAIL
SALT RIVER PIMA-MARICOPA INDIAN COMMUNITY

DETAIL NO.
204

