



MEASLES EXPOSURE ALERT

Maricopa County Department of Public Health has confirmed **new locally acquired** measles cases.

WHAT YOU CAN DO



MEASLES IS HIGHLY CONTAGIOUS

Can linger in the air for up to 2 hours.



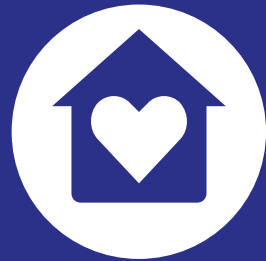
MMR VACCINATION

Is the best protection against measles.



WATCH FOR SYMPTOMS

For up to 21 days after exposure.

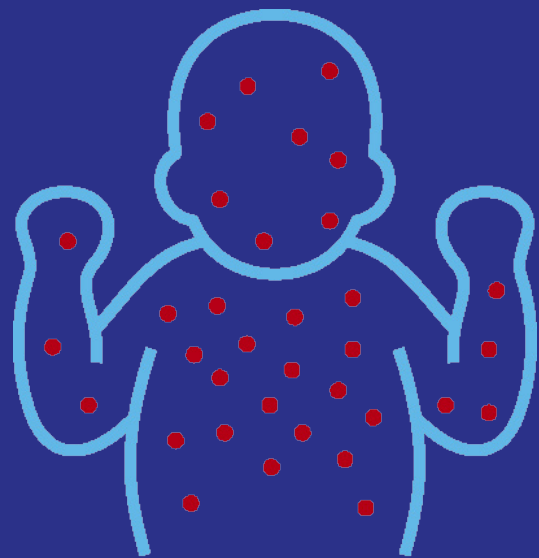


FEEL SICK?

Stay home and call ahead before seeking care.

POTENTIAL SYMPTOMS

Symptoms usually appear 7–14 days after exposure.



Cough



Red or watery eyes



High fever



Runny nose



Rash starting at the hairline and moving downward

LOCALLY ACQUIRED CASES CONFIRMED

Location	Exposure Date	Exposure Time	Watch for Symptoms Through
The Church of Jesus Christ of Latter-day Saints 10725 E. Point Twenty-Two Blvd. Mesa, 85212	Sunday, April 19	11:00 a.m. – 1:30 p.m.	Sunday, May 10
AZ Athletic Grounds Building A 6321 S. Ellsworth Rd. Mesa, 85212	Thursday, April 23	9:00 a.m. – 12:00 p.m.	Thursday, May 14
Menchie's Frozen Yogurt 5022 S. Power Rd. #108 Mesa, AZ 85212	Saturday, April 25	6:45 p.m. – 9:30 p.m.	Saturday, May 16
Fry's Food Store 2724 S. Signal Butte Rd. Mesa, 85209	Tuesday, April 28	12:45 p.m. – 3:45 p.m.	Tuesday, May 19
V's Barbershop 9317 E. Ray Rd. #106 Mesa, 85212	Tuesday, April 28	2:00 p.m. – 4:30 p.m.	Tuesday, May 19
Target 5110 S. Power Rd. Mesa, 85212	Wednesday, April 29	3:00 p.m. – 5:30 p.m.	Wednesday, May 20
Boba CuCue Bubble Tea House 5229 S. Power Rd. #101 Mesa, 85212	Wednesday, April 29	3:30 p.m. – 6:30 p.m.	Wednesday, May 20
Chili's Grill & Bar 5016 S. Power Rd. Mesa, 85212	Wednesday, April 29	5:15 p.m. – 8:00 p.m.	Wednesday, May 20
Chick-fil-A 4908 S. Power Rd. Mesa, 85212	Wednesday, April 29 Thursday, April 30	5:30 p.m. – 8:30 p.m. 5:30 p.m. – 8:30 p.m.	Wednesday, May 20 Thursday, May 21
In-N-Out Burger 1650 S. Stapley Dr. Mesa, 85204	Sunday, May 3	3:30 p.m. – 5:45 p.m.	Sunday, May 24

Questions or concerns?

Contact SRPMIC Public Health Services **480-362-2603**